

BIRDS of PREY: OWLS (K-2)

The SCIENCE of RAPTORS:

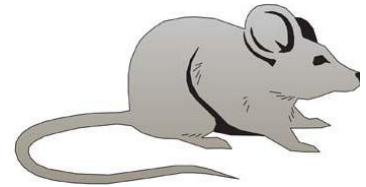
A **predator** is an animal that hunts another animal for food.



A **raptor** is a bird of prey – like an eagle, a hawk, or an owl.



Owls often swallow their prey in one bite!



The bones can't be digested and are coughed up in a **pellet**.

READ: *Owl Moon*, by Jane Yolen, is a classic story about going “owling” at night. Don't have this book at home? Listen to the [author read](#) her award-winning story.

ACTIVITY: OWL PELLETS

Materials: tray, toothpick, forceps (tweezers), [owl pellet](#), paper, pencil (optional – gloves, [pellet ID chart](#))

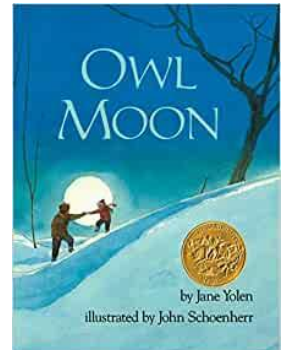
1. Carefully unwrap and inspect the outside of the pellet and place it on your tray.
2. Gently pull apart the pellet, being careful not to break any of the bones inside it. Use the forceps to remove small bones, and a toothpick to separate the fur or feathers.



TIP: Be careful while removing the skulls and jawbones, since they are the best way to identify what prey animals the owl ate.

3. Sort your bones into any groups you want.
4. Group similar bones together. When you've finished sorting the bones, roll the last bits of fur between your fingers to find little bones or teeth that might have been missed.
5. Once you've found all the bones, try to figure out what animals were eaten by using an [identification key](#).

Be sure to **WASH YOUR HANDS** when finished!



For step-by-step instructions, watch the video at: [Owl Pellet STEM Activity](#)

This at-home educational activity is from the Literacy Coalition of Palm Beach County's literacy-based Stories & STEM program. Stories & STEM is made possible with support from Prime Time Palm Beach County, Inc., which receives significant funding from the Children's Services Council of Palm Beach County, Inc.

Having fun? Send pictures or video links of you and your Stories & STEM projects to csharkey@literacyabc.org